

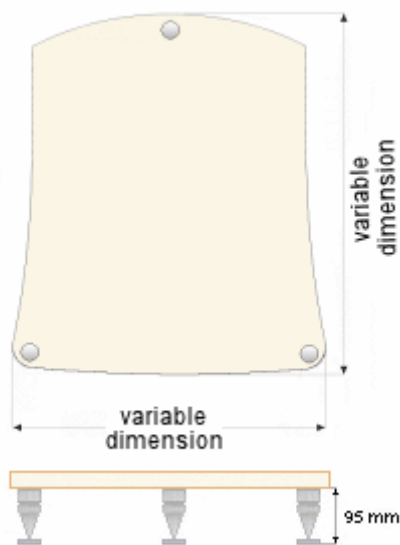


## Bandura S

Power amplifiers stand.  
Available in 3 different size and several finish.  
Innovative design with great aesthetic impact.  
Adjustable spikes to fight the vibrations and for a perfect setting.  
Massive base disk to protect delicate surface like parquet.  
Decoupling by o-ring and gum washer  
Completely customizable by on-line configurator.



### Technical data



#### OVERALL DIMENSION

- Small 14" 3/8 x 17" 7/8 / 365 x 455 mm (W x D)
- Medium 18" 1/2 x 21" 5/8 / 470 x 550 mm (W x D)
- Large 22" 7/16 x 26" 3/8 / 570 x 670 mm (W x D)

**General description:** Shelf especially conceived to host power amplifiers. Modular structure made of solid stainless steel. Adjustable spikes with massive base disks. Innovative design.

**Materials:** Structure made of stainless steel AISI313. Shelf in MDF or multilayer wood or Plexiglas

**Thickness of the shelf:** 25 mm / 1"

**Total height:** 120 mm / 4" 3/4

**Overall dimension:** Available in 3 different sizes; see technical data sheet

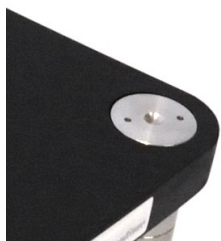
**Useful size:** Available in 3 different sizes; see technical data sheet

**Max loaded:** 80 Kgs / 176 lbs

**Decoupling:** By gum o-ring

**Note:** Supplied in kit

### Details



**Bassocontinuo Audio Systems Snc**  
via Martin Luther King, 36 – 24050 Grassobbio (BG) ITALY  
tel. + 39 035 4522080 – fax + 39 035 335728

**www.bassocontinuo.it**  
**email: info@bassocontinuo.it**